
**KEE HING CHEUNG KEE CO., LTD.
DLFTZ CHANG HING KEE
INT'L INDUSTRY & TRADE CO., LTD.**



FIRE FIGHTING VEHICLE



KHCK Since 1970 ...



Introduction



As the safety & protection department of our company, we engage in this line for more than 15 years and supply various fire protection equipments; fire fighting vehicle is the main product of them. Now we have many factories to be our supplier and some of them keep steady, long term corporation with us.

Using in pushing out fire and rescuing people etc. All products are permit by national safety & protection department and showing on national bulletin. You will get the warranty of great quality and integrated service after sales from



We have successfully exported to Brazil, Venezuela, Saudi Arabia, Bengal, Vietnam, West Africa countries areas and got a widely recognition among them. Otherwise, we can also order the different model for your special demand. With complete specification are all our preponderant products. We would like to be your strong supplier in China and a best friend at the same time. Welcome you to visit us and instruct us directly.



The Total Shape



ISUZU Fire Fighting Vehicle choose eximious Carbon Steel as main material of tank and combine with Japan Tech. Middle pressure pump with stainless material and couple horse, capacious driving cap and good operation in fire, it is a popular style for most customer.

ISUZU vehicle's character is beautiful and price is in middle. The capability we could supply from 1300L-10000L. You could choose these vehicles according to your requirement.

DONGFENG style fire fighting vehicle is the main products in China fire department and this kind of vehicle we could supply from 1800L-10000L capability tank. The vehicle's tank use carbon steel and the pump with normal and middle pressure. DongFeng vehicle's character is high speed, legerity, agility and react quickly. With spare parts to protect the equipment of the vehicle and easy maintain and mending for customer.



STEYR is popular in China with big ton, so we supply this vehicle from 8ton-15ton. As this kind of vehicle's chassis is steady and durable, so this kind of vehicle is suit for large type fire truck.

Steyr's character is sculpting beautiful and engine is better with enough power. This kind of vehicle has a good price advantage in the same type of Japan and America vehicle.

This series vehicle install advance alarm system and warning system, it has an outstanding operation and useful.



MAN is a well-known brand of the whole world. It has a very good quality and a large tank capacity. So we supply this vehicle from 2ton-15ton. As this kind of vehicle's chassis is steady and durable, so this kind of vehicle is suit for large type fire truck. Man's character is that we have authorized factory in China to make chassis, and import original engine form German, so the price is much lower than in Germany.

FIRE FIGHTING MOTORCYCLE is a new style fire fighting vehicles. It's flexible, and suitable for countryside, mud area and other off road place. The motorcycle can pass a narrow street to reach the fire place. Different motorcycle has different equipments. We can configure the water tank, foam tank, water pump on it. Certainly, they all depend on your request.



WATER & FOAM TANK FIRE FIGHTING TRUCK

Interior Structures

Suction and Output Pump

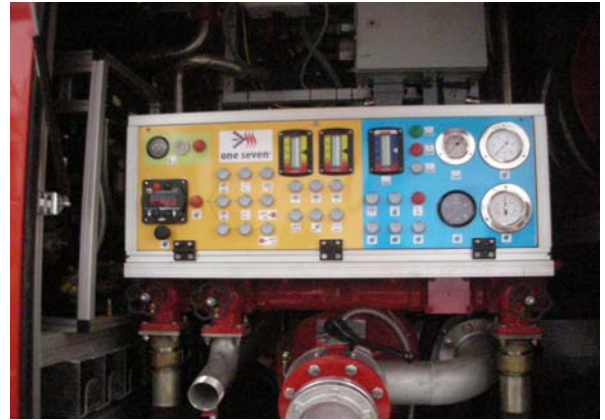


Fire Equipments



Suction Pump





Operation Cab



Fire Monitor



ISUZU CHASSIS FIRE FIGHTING VEHICLE



ISUZU Fire Fighting Vehicle List

- 1.3000L Water Fire Fighting Vehicle
- 2.3400L Water, 1600L Foam Fire Fighting Vehicle
- 3.5500L Water Fire Fighting Vehicle
- 4.7000L Water, 2700L Foam Fire Fighting Vehicle



ISUZU 3000L Water Tanker Fire Vehicle

Model	LLX5070GXFSG30	Chassis Model		NKR77PLPACJAY	
Weight parameter (kg)	Load weight	2700	Outline dimensions (mm)	6730 ×1910 ×2750	
	Curb weight	4225	Carriage dimensions(mm)	/	
	MAX overall weight	14000	Wheelbase (mm)	3815	
Engine	Model	4KH1-TC	type	strait line, six cylinder Water-cooled supercharge diesel engine	
	Power/ Engine Volume	96/2999	Product factory	QINGLING engine factory	
Performance parameter	Max speed (km/h)	100	Track span (mm)	Front axle	1504
	The number of axle	2		Rear axle	1425
	Tire	7.50-15,7.00-16	Reaching out of vehicle (mm)	Front overhang	1030
	The number of leaf of spring	8/6+5		Rear overhang	1713
	The number of tire	6	Driving angle (°)	Approach angle	23
	Number of people allow	2		Departure angle	18
Front axle description	Hold fist type I beam structure, 5T		Rear axle description	Joint the appearance,10T, the final gear ratio is 6.5。	
Cab	Forward control cab double row seats four doors type , could allow six people , 4×2 drives .				
Special Function	Water tank capacity	3000L			
	fire monitor	Model: SP30 type water monitor Water throw range: ≥55m/1.0MPa			
	Normal pressure pump	Model BS30	flow: 30L/S	pressure: 1.0MPa	



ISUZU 3400L Water 1600L Foam Fire Vehicle

Model	LLX5152GXFSG50A		Chassis Model	FVR34J2		
Weight parameter (kg)	Load weight	5000	Outline dimensions	8025×2495×3250mm		
	Curb weight	9520	Carriage dimensions	/		
	MAX overall weight	14970	Wheelbase (mm)	4500		
Engine	Model	6HK1-TC	type	/		
	Power/ Displacement (kw/ml)	191/7790	Product factory	QINGLING ATOMOBILE SHARE CO.,LTD		
Performance parameter	Max speed (km/h)	95	Track span (mm)	Front axle	1960	
	The number of axle	2		Rear axle	1855	
	Tire	10.00R20	Reaching out of vehicle (mm)	Front overhang	1335	
	The number of tire	6		Rear overhang	1990	
	The number of leaf of spring	9/14	Driving angle (°)	Approach angle	26	
	The kind of fuel	Diesel engine		Departure angle	13	
Special Function	Water tank capacity (L)		3400L	foam tank capacity (L)		
	fire monitor		Model: PP24 Dual-purpose fire monitor Water throw range: ≥45m/1.0MPa foam throw range: ≥40m/1.0MPa			
	Middle and low pressure pump		Model: CB20.10/15.30 low pressure flow: 30L/s/1.0MPa middle pressure flow: 15L/s/2.0MPa			



ISUZU 10000L Water Fire Vehicle

ISUZU 10000L Water Fire Vehicle						
Model	LLX5220GXFSG100		Chassis Model		FVZ34Q second kind	
Weight parameter (kg)	Load weight	10000	Outline dimensions (mm)		9277×2500 ×3650	
	Curb weight	11550	Carriage dimensions(mm)		/	
	MAX overall weight	22000	Wheelbase (mm)		4325+1350	
Engine	Model	6KH1-TC	type		/	
	Power/ Displacement (kw/ml)	191/7790	Product factory		WEICHAJ Engine Corporation Limited corporate	
Performance parameter	Max speed (km/h)	90	Track span (mm)		Front axle	1939, 1958
	The number of axle	3			Rear axle	1800, 1830
	Tire	10.00-20-16PR	Reaching out of vehicle (mm)		Front overhang	1560
	The number of tire	10			Rear overhang	2042
	Crewmen (persons)	6	Driving angle (°)		Approach angle	15
	The kind of fuel	Diesel engine			Departure angle	12
Cab	Forward control cab and all metal, 6×4 drive .					
Special Function	Water tank capacity (L)		10000L			
	Fire monitor		Model: PS50 water monitor, 360°level circumrotate, Max elevation angle +45°, Max bow angel -15°, flow:50L/S,throw range≥60m/1.0MPa			
	Fire pump	Normal pressure pump	Model:BD60 Flow: 60L/S Pressure:1.0MPa			



ISUZU 7000L Water 2700L Foam Fire Vehicle

Model	LLX5220GXFSG100	Chassis Model		FVZ34Q second kind	
Weight parameter (kg)	Load weight	10000	Outline dimensions (mm)	9277×2500 ×3650	
	Curb weight	11550	Carriage dimensions(mm)	/	
	MAX overall weight	22000	Wheelbase (mm)	4325+1350	
Engine	Model	6KH1-TC	type	/	
	Power/ Displacement (kw/ml)	191/7790	Product factory	WEICHAI Engine Corporation Limited corporate	
Performance parameter	Max speed (km/h)	90	Track span (mm)	Front axle	1939, 1958
	The number of axle	3		Rear axle	1800, 1830
	Tire	10.00-20-16PR	Reaching out of vehicle (mm)	Front overhang	1560
	The number of tire	10		Rear overhang	2042
	Crewmen (persons)	6	Driving angle (°)	Approach angle	15
	The kind of fuel	Diesel engine		Departure angle	12
Cab	Forward control cab and all metal. 6×4 drive .				
Special Function	Tank capacity (L)	7000L Water	2700L Foam		
	Fire monitor	Model: PS50 water monitor, 360°level circumrotate, Max elevation angle +45°, Max bow angel -15°, flow:50L/S,throw range≥60m/1.0MPa			
	Middle and low pressure pump	Low pressure flow : 60L/s/1.0MPa Max priming deeply 7m The time of max priming deeply≤50S			

DONGFENG CHASSIS FIRE FIGHTING VEHICLE



DongFeng Fire Fighting Vehicle List

1.4000L Water, 1500L Foam Fire Fighting Vehicle

2.9600L Water Fire Fighting Vehicle

3.8100L Water, 1000L Foam Fire Fighting Vehicle



DONGFENG 4000L Water 1500L Foam Fire Vehicle

Model	LLX5140GXFSG55	Chassis Model		EQ1141G7DJ second kind	
Weight parameter (kg)	Load weight	5950	Outline dimensions(mm)	7800×2499×3196	
	Curb weight	8050	Carriage dimensions(mm)	/	
	MAX overall weight	14000	Wheelbase (mm)	4500	
Engine	Model	EQB180-20	type	strait line, six cylinder Water-cooled supercharge diesel engine	
	Power/ Engine Volume	132(180HP)/5880	Product factory	DONGFENG Cummins engine limited company	
Performance parameter	Max speed (km/h)	90	Track span (mm)	Front axle	1940
	Max creeping slope capacity (%)	28		Rear axle	1800
	Oil consumption/100K(L)	21.5	Reaching out of vehicle (mm)	Front overhang	1258
	Slope stop for empty vehicle (%)	20		Rear overhang	2008
	Min circle turning Diameter(m)	16	Driving angle (°)	Proximal angle	34
	Smallest ground clearance (mm)	248		Departure angle	17
Transmission description	machine six-speed transmission	Steering explanation	Power steering	Brake system explanation	spring-brake
Clutch description	Single and dry type, dia is φ380MM		Cab	One and a half rows of flat cab, torsion bar type Turn over construct, three seat take sleeper Driver's seat is adjustable	
Front axle	Hold fist type I beam structure, 5T		Rear axle	Joint the appearance,10T	
Special Function	Tank capacity (L)	4000L Water		1500L Foam	
	Middle and Low Pressure Pump	Model: CB20.10/15.30			
		Low pressure flow 30L/s/1.0MPa			
fire monitor	Model: PP24 dual-purpose fire monitor		Range≥50m		



DONGFENG 9600L Water Fire Vehicle

Model	BX5220GXFSG100	Chassis Model		EQ1208GJ5	
Weight parameter (kg)	Load weight	9600	Outline dimensions(mm)	9550 ×2500 ×3400	
	Curb weight	11650	Carriage dimensions(mm)	/	
	MAX overall weight	21700	Wheelbase (mm)	4350+1300	
Engine	Model	EQB210-20	type	Six cylinder strait line turbocharger inter-cooled diesel	
	Power/ Displacement(km/h)	155/5880	Product factory	DONGFENG Cummins	
Performance parameter	Max speed (km/h)	90	Track span (mm)	Front axle	1940
	Max creeping slope capacity (%)	25		Rear axle	1860
	Oil consumption/100K(L)	28	Reaching out of vehicle (mm)	Front overhang	1245
	Slope stop for empty vehicle (%)	20		Rear overhang	2565
	Min circle turning Diameter(m)	20	Driving angle (°)	Approach angle	27
	Smallest ground clearance (mm)	240		Departure angle	12
Gearbox description	Machine six-speed gearbox, the double far distance control		Steering explanation	Power steering	
Front axle description	Hold fist type I beam structure, 5T		Rear axle description	Ram rivet joint the axle of appearance, Penetration type Middle and rear axle 10T×2	
Brake system explanation	Manual valve spring-brake		Clutch description	diaphragm type spring type, diaφ395MM.	
Tire	10.00R20,10.00-20,11.00-20,11.00R20		Air condition	Available to install Freon-free air condition	
Frame explanation	Ram rivet joint structure vehicle frame width is 861MM		Frame max transversal surface	280×80× (7+5) mm	
Cab	Flat head all metal closed type, torsion bar type Turn over construct three seat take sleeper Driver's seat is adjustable				
Special	Water tank capacity (L)	9600L			

Function	fire monitor		Model: PS25 water monitor throw range: ≥50m flow :25L/S
	Fire pump	Middle pressure pump	Model: CB18/15-TB middle pressure flow: 15L/S/1.8Mpa low pressure flow: 30L/S/1.0MPa
		Middle and low pressure pump	Model: CB20.10/20.40-TB middle pressure flow: 20L/S/2.0MPa low pressure flow: 40L/S/1.0MPa



DONGFENG 8100L Water 1000L Foam Fire Vehicle

Model	BX5220GXFSG100		Chassis Model	EQ1208GJ5 second type	
Weight parameter (kg)	Load weight	9600	Outline dimensions (mm)	9550 ×2500 ×3400	
	Curb weight	11650	Carriage dimensions(mm)	/	
	MAX overall weight	21700	Wheelbase (mm)	4350+1300	
Engine	Model	EQB210-20	type	Six cylinder strait line turbocharger inter-cooled diesel engine	
	Power/ Displacement(km/h)	155/5880	Product factory	DONGFENG Cummins engine limited company	
	Max speed (km/h)	90	Track span (mm)	Front axle	1940
	Max creeping slope capacity (%)	25		Rear axle	1860
	Oil consumption/100K(L)	28	Reaching out of vehicle (mm)	Front overhang	1245
	Slope stop for empty vehicle (%)	20		Rear overhang	2565

	Min circle turning Diameter(m)	20	Driving angle (°)	Approach angle	27
	Smallest ground clearance (mm)	240		Departure angle	12
Transmission description	Machine six-speed transmission		Steering explanation	Power steering	
Front axle description	Hold fist type I beam structure, 5T		Rear axle description	Ram rivet joint the axle of appearance, Penetration type Middle and rear axle 10T×2	
Brake system explanation	Manual valve spring-brake		Clutch description	diaphragm type spring type, diaφ395MM.	
Tire	10.00R20,10.00-20,11.00-20,11.00R20		Air condition	Available to install Freon-free air condition	
Frame explanation	Ram rivet joint structure vehicle frame width is 861MM		Frame max transversal surface	280×80× (7+5) mm	
Cab	Flat head all metal closed type, torsion bar type Turn over construct three seat take sleeper Driver's seat is adjustable				
Special Function	Tank capacity (L)		Water tank:8100L; Foam tank: 1000L		
	fire monitor		Model: PL24 water flow: 24L/S foam flow: 24L/S Water throw range: ≥50m/1.0MPa foam throw range: ≥45m/1.0MPa		
	Fire pump	Middle pressure pump	Model: CB18/15-TB middle pressure flow: 15L/S/1.8Mpa low pressure flow: 30L/S/1.0MPa		
		Middle and low pressure pump	Model: CB20.10/20.40-TB middle pressure flow: 20L/S/2.0MPa low pressure flow: 40L/S/1.0MPa		

STEYR CHASSIS FIRE FIGHTING VEHICLE



STEYR Fire Fighting Vehicle List

1. 6000L Water, 2000L Foam Fire Fighting Vehicle
2. 8000L Water, 4000L Foam Fire Fighting Vehicle
3. 12000L Water Fire Fighting Vehicle
4. 12000L Water, 4000L Foam Fire Fighting Vehicle



STEYR 6000L Water 2000L Foam Fire Vehicle

Model	LLX5160GXFPM60 foam fire vehicle		Chassis Model	ZZ1192L4610 second kind	
Weight parameter (kg)	Load weight	6000	Outline dimensions(mm)	8360×2496×3370	
	Curb weight	9460	Carriage dimensions(mm)	/	
	MAX overall weight	15910	Wheelbase (mm)	4600	
Engine	Model	WD615.61	type	/	
	Power/ Displacement	191/9726	Product factory	WEIFANG diesel factory	
Performance parameter	Max speed (km/h)	92	Track span (mm)	Front axle	1939
	Max creeping slope capacity (%)	28		Rear axle	1800
	Oil consumption/100K(L)	25	Reaching out of vehicle (mm)	Front overhang	1576
	Slope stop for empty vehicle (%)	20		Rear overhang	2184
	Min circle turning Diameter(m)	16	Driving angle (°)	Approach angle	18
	Smallest ground clearance (mm)	248		Departure angle	13
The number of leaf of spring	9/9+6		Tire	12.00-20	
cab	Flat head double row seat cab ,can have six people.				
Special Function	Water tank capacity (L)	6000L	Foam tank capacity (L)	2000L	
	Fire monitor	Model: PP48 Dual-purpose fire monitor flow : 48L/s/1.0MPa Water throw range: ≥60m/1.0MPa foam throw range: ≥55m/1.0MPa			
	middle and low pressure pump	Model: CB20.10/30.60 low pressure flow : 60L/s/1.0MPa middle pressure flow: 30L/s/2.0MPa			



STEYR 8000L Water 4000L Foam Fire Vehicle

Model	LLX5250GXFPM100W	Chassis Model		ZZ1256M4346F second kind	
Weight parameter (kg)	Load weight	10000	Outline dimensions (mm)	9277 ×2500 ×3650	
	Curb weight	14150	Carriage dimensions(mm)	/	
	MAX overall weight	24600	Wheelbase (mm)	4325+1350	
Engine	Model	WD615.A	type	/	
	Power/ Displacement (kw/ml)	193/9726	Product factory	WEICHAJ Engine Corporation co.,ltd	
Performance parameter	Max speed (km/h)	85	Track span (mm)	Front axle	1939, 1958
	Max creeping slope capacity (%)	25		Rear axle	1800, 1830
	Oil consumption/100K(L)	28	Reaching out of vehicle (mm)	Front overhang	1560
	Slope stop for empty vehicle (%)	20		Rear overhang	2042
	Min circle turning diameter(m)	18	Driving angle (°)	Approach angle	15
	Smallest ground clearance (mm)	248		Departure angle	12
Transmission description	Fuller transmission/ZF Transmission		Tire	11.00-20	
Cab	Flat head all metal to up, 6*4drive				
Special Function	Tank capacity (L)	Water tank : 8000L Foam tank : 4000L			
	Fire monitor	Model: PL48-64D Dual-purpose fire monitor Water flow: 50L/S Foam flow: 48L/S (can adjust) Water throw range≥60m/1.0MPa Foam throw range≥50m/1.0MPa			
	middle and low pressure pump	Model:CB20.10/30.60 Middle pressure flow:30L/S/2.0MPa Low pressure flow: 60L/S/1.0MPa Max sucking deeply 7m The time of max sucking deeply≤50S			



STEYR 12000L Water Fire Vehicle

Model	LLX5250GXFPM100W	Chassis Model		ZZ1256M4346F second kind	
Weight parameter (kg)	Load weight	10000	Outline dimensions (mm)	9277 ×2500 ×3650	
	Curb weight	14150	Carriage dimensions(mm)	/	
	MAX overall weight	24600	Wheelbase (mm)	4325+1350	
Engine	Model	WD615.A	type	/	
	Power/ Displacement (kw/ml)	193/9726	Product factory	WEICHAI Engine Corporation co., Ltd	
Performance parameter	Max speed (km/h)	85	Track span (mm)	Front axle	1939, 1958
	Max creeping slope capacity (%)	25		Rear axle	1800, 1830
	Oil consumption/100K(L)	28	Reaching out of vehicle (mm)	Front overhang	1560
	Slope stop for empty vehicle (%)	20		Rear overhang	2042
	Min circle turning diameter(m)	18	Driving angle (°)	Approach angle	15
	Smallest ground clearance (mm)	248		Departure angle	12
Transmission description	Fuller transmission/ZF Transmission		Tire	11.00-20	
Cab	Flat head all metal to up, 6*4drive				
Special Function	Tank capacity (L)	Water tank : 8000L			
	Fire monitor	Model: PL48-64D Dual-purpose fire monitor Water flow: 50L/S Foam flow: 48L/S (can adjust) Water throw range≥60m/1.0MPa Foam throw range≥50m/1.0MPa			
	Normal pressure pump	Model: BD60 flow: 60L/S pressure: 1.0MPa			



12000L Water, 4000L Foam Fire Fighting Vehicle

Model	LLX5300GXFPM150	Chassis Model		ZZ1256M4346F	
Weight parameter (kg)	Load weight	15000	Outline dimensions	9875×2490 ×3490mm	
	Curb weight	14200	Carriage dimensions(mm)	/	
	MAX overall weight	29650	Wheelbase (mm)	4325+1350	
Engine	Model	WD615.62	type	/	
	Power/ Displacement (kw/ml)	196/9726	Product factory	WEICHAI Engine	
Performance parameter	Max speed (km/h)	85	Track span (mm)	Front axle	1939, 1958
	Max creeping slope capacity (%)	25		Rear axle	1800, 1830
	Oil consumption/100K(L)	28	Reaching out of vehicle (mm)	Front overhang	1560
	Slope stop for empty vehicle (%)	20		Rear overhang	2640
	Min circle turning diameter(m)	18	Driving angle (°)	Approach angle	15
	Smallest ground clearance (mm)	248		Departure angle	12
Transmission description	Fuller transmission/ZF Transmission		Tire	11.00-20	
Cab	Forward control cab all metal to up, 6*4drive				
Special Function	Tank capacity (L)	Water tank :12000L Foam tank : 4000L			
	Fire monitor	Model: PL48-64D Dual-purpose fire monitor Water flow: 50L/S Foam flow: 48L/S (could adjustable) Water throw range≥60m/1.0MPaFoam throw range≥50m/1.0MPa			
	middle and low pressure pump	Model:CB20.10/30.60 Middle pressure flow:30L/S/2.0MPa Low pressure flow: 60L/S/1.0MPa Max sucking deeply 7m The time of max sucking deeply≤50S			

Fire Fighting Vehicle Standard Equipment (Free)

number	Name	Amount	Note
1	fire suction pipe	Eight m	
2	water strainer	one	
3	Water separator (Clip type connection)	one	
4	Fire monitor (Clip type connection)	Two	QZG19 1 QZH19 1
5	Φ80 fire hose (20 type、Clip type connection)	four	Each one has 20m
6	Φ65 fire hose (20 type、Clip type connection)	Eight	Each one has 20m
7	Hose gaiter	four	
8	Hook	Two	
9	Protecting band axle	one	
10	Different diameter connection 80 male /65 female, 65 male /80 female	Each have one set	
11	Different type connection 65 inside buckles type /65 Clip type male buckles connection、 Different type connection 65 inside buckles /65 Clip type female connection Different type connection 80 inside buckles /80 Clip type male buckles connection、 Different type connection 80 inside buckles /80 Clip type female connection	Each have one set	
12	couplings	one	
13	Suction pipe spanner	Two	
14	Aboveground fire spanner	one	
15	underground fire spanner	one	
16	Extinguish	one	
17	Fire axe	one	
18	Spade	one	
19	Persuader	one	
20	“T” pickaxe	one	
21	tools of vehicle	one set	
22	Pull ladder	one set	9m

Note: This is Isuzu,DongFeng and Styer Standard Equipment for free

MAN CHASSIS FIRE FIGHTING VEHICLE



TECHNICAL SPECIFICATIONS

JDX5180GXFPM60 FOAM FIRE-FIGHTING TRUCK

1 Model: JDX5160GXFPM60 Fire-Fighting Truck

2 Specifications:

2.1 Chassis

Model: YTQ1200FD2J1

Driving model: 4 × 2

Engine Model: MAN D2866LF27

Fuel: Diesel

Discharge standard: Europe III

Discharge Capacity: 11.967 L

Power: 265KW (360HP) at 1800-1900rpm

Torque (max.): 1700N • M at 900-1400rpm

Inline six-cylinder turbocharged cooling engine, thermostatically controlled fan, heating oil and water separator charged the fuel filter, flame preheat cold start system (for cold areas)

Transmission: EATON RT-11710B, 10 No. forward bumpers, 1 No. inverted bumpers, first speed ratio 14.78, the highest ratio 1.

Clutch: EATON MFZ430-single pull-type clutch, clutch-diameter of 430 mm, hydraulic pressure assisted

Steering System: ZF8098 direction of hydraulic power, height and angle adjustable steering wheel, steering wheel locks

Exhaust system: flash hider with spark proof

Cooling system: Germany BEHR

Braking system: double-circuit braking system, ABS + EBD, the engine exhaust valve brake (EVB), front and rear the bridge drum brakes, heating-air dryer

Instruments: MAN F2000 system, the driver automatically electrical-drive recorder, fuel gauge, tachometer gauge, oil hydraulic gauge, back bumper horns, etc.

Overall Size: (L × W × H) 7500 × 2500 × 3500mm

Tire: (2+4+1) 315/80R22.5

Maximum speed: 117km / h

Minimum turning diameter: 20m

The largest climbing: 56%

Minimum ground clearance: 254mm (front), 240 mm (rear)

Pass angle: Approach angle: 16 ° Departure angle: 23 °

Chassis weight: 7460kg

Full load quality: 18000kg

Fuel tank: 280L

2.2 Cabin

Structure: The all-steel stamping parts welded structure, install double-row seat to rollover the double-cab hydraulic oil tanks overturned, can be moved overturned forward

Seats settings: Four-door 2+4

Inside cabin equipment: automatic temperature control air conditioning system of environmental protection (R134A refrigerant, without Freon), Radio + CD. In addition to the car equipment, the installation of P.O.T. controlled switches, siren, alarms lights, indicator lights, sign lights, profile signal controlled switches

2.3 Fire System

2.3.1 Water tank: 5000 L, foam tank: 1000 L

Material: 316L stainless steel, thickness:5 mm

Equipment: 2 No. inspection holes (each one for front and rear), with a quick locking and opening devices.

1 No. overflow device.

2 No. level indicators.

2 No. discharge outlet, with ball valves, to discharge from the side of the vehicle.

2 No. injection inlet, mounted beneath both two sides of the vehicle, through the top of the vehicle to inject water down.

2.3.2 Pump system

2.3.2.1 Pump

Manufacturer: The U. S. Darley company

Model: KSP1500

Normal pressure (MPa): 1.0

Normal pressure flow (L / S): 90

Installation: rear mounted

2.3.2.2 Priming pump

Mechanical piston vacuum pump

Priming time: ≤ 80 s

Suction deeply: ≥ 7 m (standard condition)

2.3.2.3 Pipeline system

Inlet: One suction inlet $\Phi 125$ mm mounted at the rear of pump room, with an aerodynamic $\Phi 125$ mm butterfly valve inlet, to connect the tank

Inject inlet: two one-way valve $\Phi 80$ mm inject inlet mounted at both sides of the vehicle.

Outlet: the pumping station located both the rear side with 2 ball valve $\Phi 80$ mm and $\Phi 65$ mm the outlet.

Surplus water discharge pipeline: to protect the water pump and valve, installed surplus water discharge ball valve in the pipeline.

Cooling water pipeline: to protect P.T.O for normal work, installed additional cooling device in the pipeline.

2.3.2.4 Foam proportioner

Manufacturer: U. S. Darley company

Model: AF125

Type: complete automatic

Mixed rate: 0-9.9 %, automatic adjustment

2.3.2.5 Top Monitor

Model: PL80

Location: Top of tank

Jet monitor Rotation angle: 360°

Spry nozzle elevation: $\leq 70^\circ$

Spry nozzle depression angle: $\leq -15^\circ$

Work pressure (MPa): ≤ 1.0

Flow rate (L/s) : 80

2.3.2.6 Hose Reel

Model: PS4/25

Specification: 25mm \times 40m

Quantity: 2 Groups

2.4 P.T.O

Model: QTSE800FE-A

Ratio: 1.425 (growth)

Maximum output torque: 800N \cdot M

Control: Pneumatic Control

Lubrication: splash oil lubricating

P.T.O with filling: operation for a long time

2.5 Storage compartment and Pump room

Material: framework made out of the high-quality carbon steel, interior strake of the 2.5 mm aluminum jacquard card (anode treatment). Outside covered skin made out of high-quality carbon steel plate

Structure: (1) the interior frame of storage compartment and pump room made out of welding structure, the top face to be 2.5 mm jacquard steel plate, high strength, rigid, and nice.

(2) the inside storage compartment to be aluminum plate.

(3) convenient switch of roll shutter, with push-button locking handle

2.6 foot flap

Location: beneath the roll shutter.

Material: steel frame aluminum jacquard card

Structure: gas spring and overturned, safe and reliable

Panel and equipment

Location: the panel mounted in the pump room.

Equipment on the panel:

2 No. level gauge

1 No. revolution counter

1 No. manometer

1 No. vacuum gauge

1 No. lighting switch

2.8 Electrical system:

Long row alarm light mounted on the top of the cabin. A red lighting light at back (at the top of the pump room). The rear with a mobile lighting light, siren's output power of 80 W, and equipped with a microphone, two side sign lights mounted on both sides of the compartment front and rear, the rear of the vehicle with two gallery lights

2.9 Painting

Using high-quality polyurethane paint, a long-term accretes, no chap, not falling, to prevent debris impact, corrosion resistance, and nice features.

Bright red paint: cabin, storage compartment, pump room, rims' inner ring (except roll shutter).

White: rims' outer ring, the bumper of front and rear.

2.10 Equipment configuration

Equipment disposal principles: according to the frequency of fire-fighting tactics and use equipment to placed equipment, configuration reasonable and convenient access

2.11 Vehicle technical performance accord with GB7956-1998 "Fire-fighting Performance Requirements and Test Methods". Overall appearance with GA39.5 "Foam Fire-fighting General Technology" conditions of the relevant provisions

2.12 Technical Document with the Vehicle

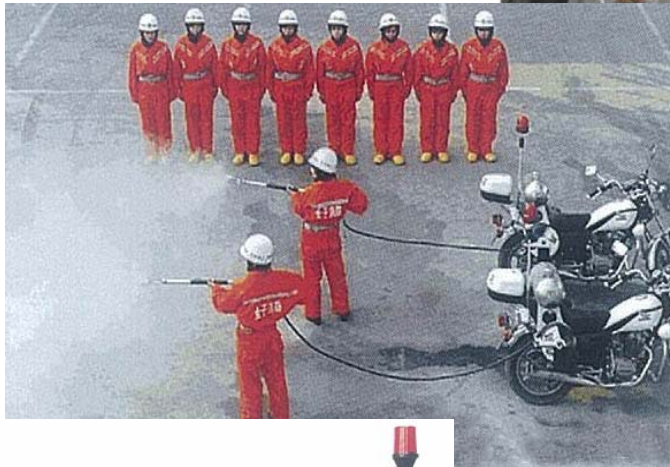
1 Chassis operation manual

1 Chassis maintenance manual

1 Fire-fighting truck operation manual

1 Fire-fighting truck conformance certification

FIRE FIGHTING MOTORCYCLE



Fire Fighting Motorcycle List

1. 4XM-PA/100-BJ Motorcycle
2. 4XM-FF/100 Motorcycle
3. 4XM-PA/100 Motorcycle
4. 3XM-BJ/10 Motorcycle
5. 4XM-BJ/9.6 Motorcycle

MODEL 4XM-PA/100-BJ DRY POWDER / WATER PUMP FIRE FIGHTING MOTORCYCLE



Parameter:

Fixed full volume (kg): 30
Available jet times: ≥ 60
Throw range(m): ≥ 10
Jet remaining ratio: $\leq 5\%$
Overall size (mm) : 2300x1090x1750
Wheelbase (mm): 1160
Fully-loaded weight (kg): 570
Actuating mode: Electrical Manual

Accessories:

- Model JBQ5.0/14 water pump
- 3 pcs ABC 4KG fire extinguisher
- 3 pcs DN65 fire hose of 20 m

MODEL 4XM-FF/100 DRY POWDER FIRE FIGHTING MOTORCYCLE



Parameter:

Fixed full volume (kg): 80
Available jet times: ≥ 60
Throw range(m): ≥ 10
Jet remaining ratio: $\leq 5\%$
Overall size (mm) : 2200x1090x1750
Wheelbase (mm): 1160
Fully-loaded weight (kg): 570
Actuating mode: Electrical Manual

Accessories:

- Fire equipment of dry powder 80kg, ABC dry powder

MODEL 4XM-PA/100 FOAM FIRE FIGHTING MOTORCYCLE



Parameter:

Fixed full volume (kg): 100
Available jet times: ≥ 70
Throw range(m): ≥ 10
Overall size (mm) : 2200x1090x1750
Wheelbase (mm): 1160
Fully-loaded weight (kg): 570
Actuating mode: Electrical Manual

Accessories:

- Fire equipment of foam 100kg

MODEL 3XM-BJ/10 3-WHEELS WATER PUMP FIRE FIGHTING MOTORCYCLE



Parameter:

Power: 13 P
Fixed operation pressure(Mpa): ≥ 0.5
Pump working flow (L/min): ≥ 450
Max lift(m): ≥ 12
Suction lift (m) : ≥ 7
Overall size (mm) : 3150x1160x1850
Wheelbase (mm): 2150
Fully-loaded weight (kg): 750
Actuating mode: Electrical Manual

Accessories:

- Model JBQ5.0/14 water pump
- Monitor
- 6 pcs DN65 fire hose of 20 m

MODEL 4XM-BJ/9.6 WATER PUMP FIRE FIGHTING MOTORCYCLE



Parameter:

Overall size (mm) : 2300x1090x1750

Wheelbase (mm): 1160

Fully-loaded weight (kg): 570

Actuating mode: Electrical Manual

Accessories:

- Model JBQ5.0/14 water pump
- Monitor
- 3 pcs DN65 fire hose of 20 m