

**KEE HING CHEUNG KEE CO., LTD.
DLFTZ CHANG HING KEE
INT'L INDUSTRY & TRADE CO., LTD.**



Armored passenger vehicles

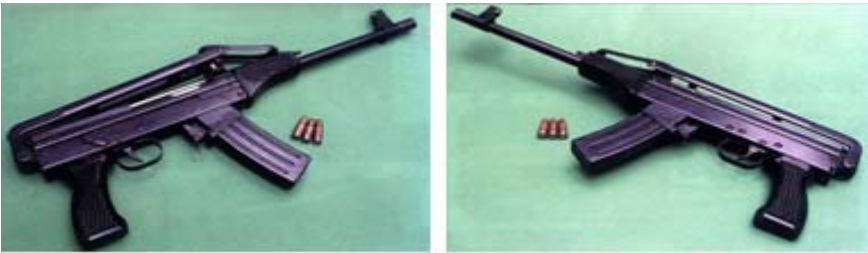
Armored Passenger Vehicles Collection

Ballistic Protection Performance:

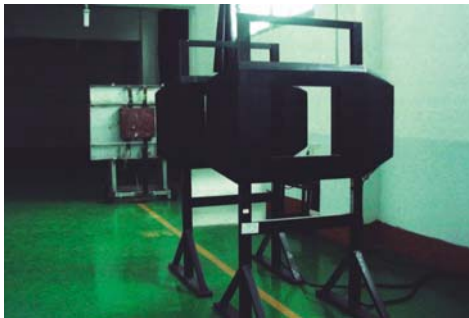
GA164-2005 China, Level A

It protects against Chinese 79 type light sub-machinegun and almost all Chinese pistols.

Tested Parts	Level	Weapon	Bullet	Distance	Velocity	Shots
Transparent and Opaque	A	Chinese 79 type light sub-machinegun	7.62mm 5.6 gram, steel bullet	5m	490-515 (m/s)	3
				10m		3
				15m		3



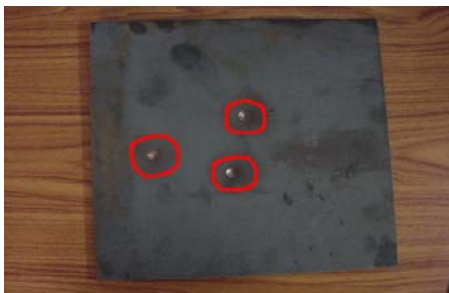
79 type submachine gun
51 style 7.62mm hand gun bullets
Velocity: 480-515m/s



Ballistic Test Equipment



Precise Processing Machine



Tested Ballistic Materials



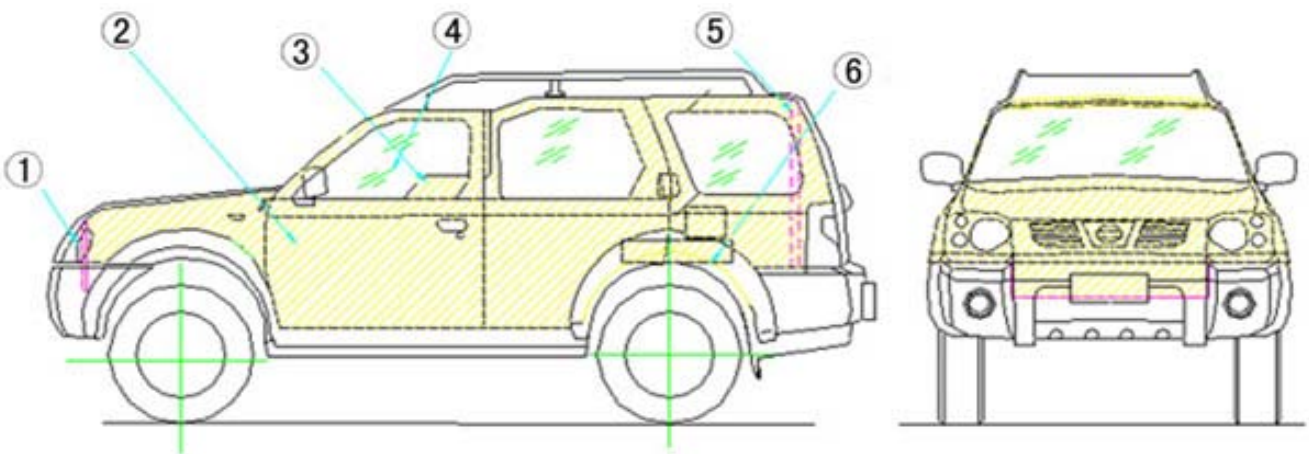
Armored SUV



General features:

1. The base vehicle was manufactured in China, it adopts special cross-country chassis ZN6452WAG.
2. It is with graceful shape and international-standard outer design, vehicle top is equipped with luggage rack.
3. The whole vehicles is with KA24 Multi-Point-Injection (MPI) gasoline engine from Japan and the engine power can reach 150 horse power (HP)
4. It is with dual airbags and electronic Anti-Lock Braking System (ABS).
5. It is one of the most popular cross-country vehicles in Chinese market.

Protection Layout:



Refitting Features

*The armoring system is integrated after the production process of the base vehicle without changing its exterior appearance. Multi-direction ballistic protection enables a great safety as well as comfort and eminence.

*Transparent areas: Windshield, rear glass and side glass will be removed and replaced with bullet-resistant transparent armor multi-layer glass and polycarbonate inner layer to prevent spalling upon ballistic impact. Glass will be curved and contoured to retain the appearance of the original.

* Body: doors, pillar posts, side panels and so on will be armored with ballistic composite material or ballistic steel in accordance with defined standard of defeat. Reinforcement of pillar posts and hinges, high pressure heavy duty suspensions, protection of fuel tank, water tank and battery.

Technical Features:

Product Code	SL5020XYCR1
Chassis Model	ZN6452WAG
Base Vehicle Manufacture Place	Zhengzhou, China
Seating Capacity	5
Dimensions L x W x H (mm)	4550 x 1840 x 1880
Wheel Base (mm)	2650
Wheel Tread (F/R) (mm)	1525/1505
Full Loaded Weight (kg)	2410
Curb Weight (kg)	2010
Payload (kg)	400
Fuel Consumption (L/100km)	11.5
Drive Type	4 x 4
Min. Steering Diameter (m)	11.4
Min. Ground Clearance (mm)	215
Engine Model	KA24
Engine Type	Liquid Cooling, Electronic-Injection, Petrol
Engine Power (Kw)	110

Basic Equipments:

1. Front Ballistic Windshield
2. Driver and Co-driver's Ballistic Window Glass (Light SPC material)
3. Ballistic side windows (PC material)
4. Central locking system
5. Air-conditioning system
6. Reinforced rear leaf spring
7. Power steering
8. Aluminum rims
9. Color LCD monitoring system
10. Shooting (mailing) ports in diver and co-driver's windows (power up-and-down)
11. Power riot-proof sunroof
12. Remote alarm, anti-theft and anti-hijacking system
13. Roof luggage rack
14. ABS (anti-lock braking system)

Special recommendation:
Above Paladin we exported to Afghanistan in 2005 so far in good service condition.



Land Cruiser Armored SUV



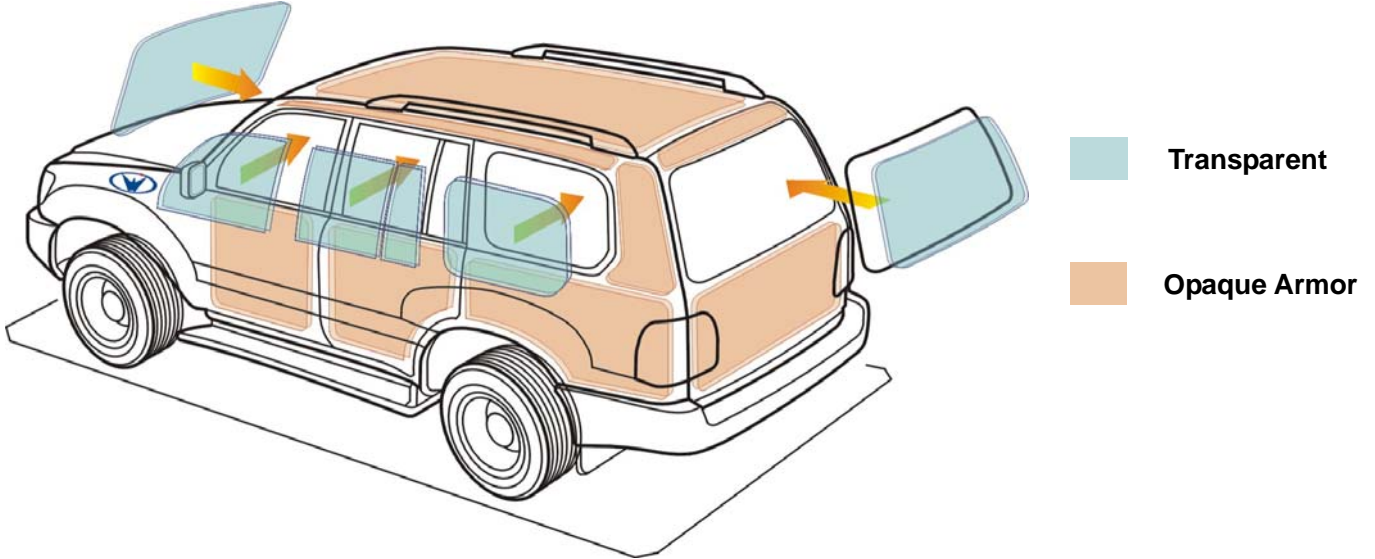
Refitting Features

*The armoring system is integrated after the production process of the base vehicle without changing its exterior appearance. Multi-direction ballistic protection enables a great safety as well as comfort and eminence.

*Transparent areas: Windshield, rear glass and side glass will be removed and replaced with bullet-resistant transparent armor multi-layer glass and polycarbonate inner layer to prevent spalling upon ballistic impact. Glass will be curved and contoured to retain the appearance of the original.

* Body: doors, pillar posts, side panels and so on will be armored with ballistic composite material or ballistic steel in accordance with defined standard of defeat. Reinforcement of pillar posts and hinges high pressure heavy duty shocks.

Protection Layout:



RSE



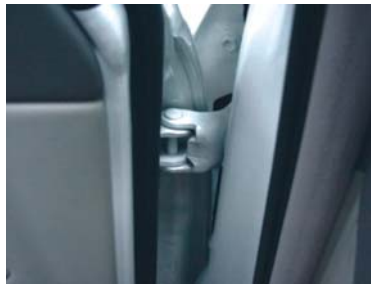
Central Control Platform



Drive Cab



Run-flat tire



Reinforced hinge



Imported window lifter

Technical Features

Vehicle Model	4.7L VX-R
Ballistic Level	Level A-China GA164-2005
Curb Weight (Kg)	2945
Full Loaded Weight (Kg)	3200
Engine Model	2UZ-FE
Engine Type	V8, DOHC, 32 Valves
Displacement (cc)	4664
Bore x Stroke (mm)	94 x 84
Max Power (kw / rpm)	175/4800
Max. Torque (N.m / rpm)	434/3400
Max. Speed (km/h)	180
Fuel Supply	ECI (Electronic Control Injection)
Fuel Capacity (L)	96
Total Length (mm)	5080
Total Width (mm)	1940
Total Height (mm)	1890
Wheel Base (mm)	2850
Wheel Tread F/R (mm)	1610/1615
Min. Ground Clearance (mm)	220
Min Steering Radius (m)	5.9
Max. Approach Angle	31 Degree
Max. Departure Angle	23 Degree
Seating Capacity	5

Equipments

Tires and rims:

275/65R17X8JJ aluminum rim, run-flat tires optional for customers

Mechanical facilities:

Full time 4 wheel drive, Active Height Control Suspension (AHC)

Safety:

Vehicle Stability Control (VSC), Active Traction Control System (A -TRC), Anti-Locking Braking System (ABS)

SRS air bags (driver and co-driver), Glare reduction rear view mirror, Fuel cut-off system Leather seating

Dashboard:

Self-lighting dashboard, Multi-function display screen, Power adjustment of steering wheel (memory function)

Automatic cruise system

Inner package:

Wood decoration central control platform Leather steering wheel Automatic air-conditioning

Rear heating Automatic CD player

Mitsubishi Leopard Armored SUV



SL5029XYC / SL5029XYCA / SL5029XYCB

Refitting features:

1. Strengthening treatment for chassis and body, reinforcement with front and rear leaf springs, transmission, clutch and derailer to increase load capacity
2. Reinforced treatment for door frame, hinges, internal and external front pillars, which extend service life.
3. Supplementary locker for door locks to prevent four doors from sinkage, dust and leakage
4. Fixed welding connection between ballistic glass and rear door, reduces door weight.
5. Same outer look and performance with original vehicle.
6. Passenger area wrapped with ballistic materials, protect against 79 type submachinegun.
7. Protection of water tank, fuel tank, storage batteries.

Basic Equipments:

1. Front Ballistic Windshield
2. Driver and Co-driver's Ballistic Window Glass (Light SPC material)
3. Ballistic glasses for side windows (PC material)
4. Side tread board
5. Gun (mailing) ports in driver and co-driver's windows (power up-and-down)
6. Gun ports in left and right side of escort compartment
7. Central locking system
8. Air-conditioning system (separable front and rear)
9. Power steering
10. Color LCD monitoring system
11. Power riot-proof sunroof
12. Remote alarm, anti-theft and anti-hijacking system
13. Aluminum rims



Technical Features

Product Code	SL5029XYC	SL5029XYCA	SL5029XYCB
Chassis Mode	CFA6470M	CFA6470L	CFA2030C
Base Vehicle Manufacturer	Hunan Changfeng, China (Mitsubishi Tech)		
Seating Capacity	5		
Dimensions (LxWxH)(mm)	4800 x 1830 x 1890		4800 x 1835 x 1920
Wheel Base(mm)	2725		2728
Wheel Tread(mm)(F/R)	1470/1490		1465/1485
Full Loaded Weight (kg)	2500		2700
Curb Weight (kg)	1975	2150	2200
Load Capacity (kg)	525	350	500
Fuel Consumption (L/100km)	11		13
Min. Steering Dia. (m)	13		
Min. Ground Clearance	210		225
Engine Model	4G64S4M		6G72
Engine Type	4X2 rear drive, water cooling gasoline engine	4x4, water colling, MPI gasoline engine	4x4, V6, MPI, gasoline engine
Engine Power (kw)	91.9	91.9	133

Isuzu Landwind Armored SUV



Refitting features:

1. Strengthening treatment for chassis and body, reinforcement with front and rear leaf springs, transmission, clutch and derailer to increase load capacity.
2. Reinforced treatment for door frame, hinges, internal and external front pillars, which extend service life.
3. Supplementary locker for door locks to prevent four doors from sinkage, dust and leakage.
4. Fixed welding connection between ballistic glass and rear door, reduces door weight.
5. Same outer look and performance with original vehicle.
6. Passenger area wrapped with ballistic materials, protect against 79 type submachinegun.
7. Protection of water tank, fuel tank, storage batteries.

Basic Equipments:

1. Front Ballistic Windshield
2. Driver and Co-driver's Ballistic Window Glass (Light SPC material)
3. Ballistic glasses for side windows (PC material)
4. Central locking system
5. Air-conditioning system
6. Reinforced rear leaf springs
7. Power steering
8. Aluminum Rims
9. Color LCD monitoring system
10. Gun (mailing) ports in driver and co-driver's windows (power up-and-down)
11. Gun ports in left and right side of vehicle (optional)
12. Power riot-proof sunroof
13. Remote alarm, anti-theft and anti-hijacking system



Technical Features

Product Code	SL5027XYCB
Chassis Mode	QL6470DY11
Base Vehicle Manufacturer	Chongqing Isuzu China
Seating Capacity	5
Dimensions (LxWxH)(mm)	4740 x 1795(1695) x 1770(1690)
Wheel Base(mm)	2760
Wheel Tread(mm)(F/R)	1425/1400
Full Loaded Weight (kg)	2300
Curb Weight (kg)	1850
Load Capacity (kg)	450
Fuel Consumption (L/100km)	11
Min. Steering Dia. (m)	11
Min. Ground Clearance (mm)	220
Engine Model	4ZE1-MPI
Engine Type	4 x 4 Gasoline engine
Engine Power (kw)	89

Isuzu Pick-Up Armored SUV



SL5022XYCB / SL5022XYCC / SL5023XYCB / SL5023XYCC

Basic Equipments:

1. Front Ballistic Windshield
2. Driver and Co-driver's Ballistic Window Glass (Light SPC material)
3. Ballistic glasses for side windows (PC material)
4. Central locking system
5. Air-conditioning system
6. Reinforced rear leaf springs
7. Power steering
8. Aluminum Rims
9. Color LCD monitoring system
10. Gun (mailing) ports in driver and co-driver's windows (power up-and-down)
11. Gun ports in left and right side of vehicle (optional)
12. Power riot-proof sunroof
13. Remote alarm, anti-theft and anti-hijacking system
14. Roof luggage rack
15. Rear drip moulding

Technical Features

Product Code	SL5022XYCB	SL5022XYCC	SL5023XYCB	SL5023XYCC
Chassis Mode	TFR17HDLMB	TFS17HDLMB	TFR55HDLJB	TFS55HDLJB
Base Vehicle Manufacturer	Chongqing Isuzu, China			
Seating Capacity	5			
Dimensions (LxWxH)(mm)	4975 x 1690 x 1760	4975 x 1690 x 1800	4975 x 1690 x 1760	4975 x 1690 x 1800
Wheel Base(mm)	3025			
Wheel Tread(mm)(F/R)	1425,1460/1400,1435	1425,1390/1400	1425,1460/1400,1435	1425,1460/1400,1435
Full Loaded Weight (kg)	2610	2690	2680	2760
Curb Weight (kg)	1875	1980	1970	2050
Load Capacity (kg)	735	710	710	710
Fuel Consumption (L/100km)	11		8	
Min. Steering Dia. (m)	11			
Min. Ground Clearance (mm)	190	215	190	215
Engine Model	4ZE1-MPI		4JB1-T1	
Engine Type	4 X 2 Gasoline engine		4x2 water cooling Diesel engine	4x4 water cooling Turbo chagerd Diesel engine
Engine Power (kw)	89		70	